



Sasria SOC Limited

**(Inamba Yokurejistwa:
1979/000287/06)**

*IManywali Yolwazi ngokwesigaba 14
soMthetho Wokukhuthaza Ukutholakala
Kolwazi, 2 ka-2000*

ILUNGELO LOKUKOPISHA LIGODLIWE

Leli dokumende liqukethe ulwazi lobunikazi (proprietary information) kanti amalungelo (rights) ngaloko okuphakathi agodliwe. Ulwazi oluqukethwe yileli dokumende akuvumelekile ukulukopisha, ukuludalula noma ukulusebenzisa ngisho nangayiphi indlela ngaphandle kwemvume ebhaliwe etholwe kusengaphambili ye-SASRIA SOC Ltd (i-"SASRIA" noma "inkampani"). Nanoma kuphi ukukhiqizwa busha noma ukudalulwa kolwazi oluqukethwe yileli dokumende kuzosho ukwepulwa kwamalungelo empahla yobuhlakani nokwepulwa kwelungelo lokukopisha futhi kubeke umuntu okwenzayo esimweni

sokulandisa ngaphansi komthetho wobelelesi. Loko kwepulwa kungase kuphumele kumonakalo okhokhelwa i-SASRIA futhi kubeke loyo muntu esimeni sokulandisa ngaphansi komthetho wemibango.

Nakuba kuye kwaqikelelwa ukuze kuqinisekiswa ukunemba kolwazi oluqukethwe yileli dokumende, i-SASRIA ayemukeli mthwalo wokuziphendulela nganoma siphil isenzo, ukungenzi, ukulahlekelwa, umonakalo noma imiphumela yaloko okubangwa wukuthembela kwanoma muphi umuntu kuloko okuqukethwe.

IKHASI LOKUPHAKATHI

UMTHETHO WOKUKHUTHAZA UKUTHOLAKALA KOLWAZI, 2 KA-2000 (UMTHETHO)

Ukulawulwa Kwedokumende	4
1. Izifushaniso	5
2. Isingeniso	5
3. Injongo Yale Manywali	6
4. Amatemu Awusizo/Izincazo	6
5. UMkhombandlela WoMlawuli (Regulator) Ngokwesigaba 10 soMthetho ..	8
6. Imininingwane Yokuthintana	8
7. Ukwelekelwa kweSicelo soKutholakala Kolwazi	9
8. Mayelana ne-SASRIA	9
9. Injongo Yethu	10
10. Ibhizinisi Lethu.....	11
11. Uhlaka Lohleleko.....	12
12. Uhlaka Lokwenziwa Komsebenzi.....	13
13. Inqubomgomo Ngokuphathelene Nobumfihlo Nokutholakala Kolwazi...	13
14. Ulwazi Oluvele Lutholakale	13
15. Ulwazi Olutholakala Ngokweminye Imithetho	14

16. Amarekhodi Agcinwe Yi-SASRIA	16
17. Ukuvikelwa Kolwazi Ngomuntu Siqu Olusetshenzwa Yi-SASRIA.....	22
18. Izingqubo Zokufaka Isicelo.....	24
19. Ulwazi noma Amarekhodi Okungatholakali.....	25
20. Izizathu Zokwenqabela Ukutholakala Kolwazi	25
21. Ukutholakala Kwale Manywali.....	27
22. Izindlela Zokulungisa Ezitholakalayo Uma Izinhlinzeko ZoMthetho Zingalandelwa	27
23. Ukulungiswa KweManywali Ihambisane Nesikhathi	28
24. Ukwemukelwa Kwenqubomgomo Ngabasebenzayo	28
25. Umuntu Osayinayo.....	28

ISITHASISELO A – Isicelo sokutholakala kwerekhodi (iSigaba 53(1) soMthetho Wokukhuthaza Ukutholakala Kolwazi, 2000 (uMthetho Na. 2 ka-2000) (iSiqondiso 10))

ISITHASISELO B – Izimali Ezikhokhwayo

UKULAWULWA KWEDOKUMENDE

Usuku	Uhlelo	Ukuchazwa	Umlobi
1 Mashi 2021	1.0	Idrafu Yokuqala	Wayne Beelders wase-RAiN Chartered Accountants
11 Mashi 2021	1.1	Idrafu Yesibili	Wayne Beelders wase-RAiN Chartered Accountants

1. IZIFUSHANISO

Lezi zifushaniso ezilandelayo ziyatholakala kule Manywali futhi zisetshenziswe kaningi:

DIO – IPhini Lesikhulu Solwazi (Deputy Information Officer)

IO – ISikhulu Solwazi (Information Officer)

PAIA – UMthetho Wokukhuthaza Ukutholakala Kolwazi 2 ka-2000 (Promotion of Access to Information Act 2 of 2000)

POPI – UMthetho Wokuvikelwa Kolwazi Ngomuntu 4 ka-2013 (Protection of Personal Information Act 4 of 2013)

SAHRC – IKhomishani Yamalungelo Abantu YaseNingizimu Afrika (South African Human Rights Commission)

SASRIA – USosesheni Womshwalense Wezingcuphe Ezikhethekile WaseNingizimu Afrika (South African Special Risks Insurance Association)

2. ISINGENISO

UMthetho Wokukhuthaza Ukutholakala Kolwazi ka-2000 (uMthetho Na. 2 ka-2000) (PAIA) unika ilungelo lokuba kutholakale ulwazi njengoba kuhlinzekwe yisigaba 32 soMthetho-sisekelo, kuye ngokwemingcele efanelekile, ehlanganisa, nokho kungagcini lapho, imingcele ehloselwe ukuvikelwa ngokusesilinganisweni esikahle kwengasese, ubumfihlo bezentengiselwano, kanye nolawulo olushaya khona, olongayo futhi lwezinga elihle.

ISigaba 9 se-PAIA siyakuqaphela ukuthi ilungelo lokutholakala kolwazi lihambisana nemingcele ethile efanelekile ehloselwe, phakathi kokunye, kuloku:

- ukuvikelwa kwengasese ngokwesilinganiso esifanele;
- ubumfihlo bezentengiselwano;
- ulawulo olushaya khona, olongayo futhi lwezinga elihle.

ISigaba 14(1) se-PAIA sibalula ukuthi iSikhulu Solwazi seSikhungo Sikawonkewonke kumele senze imanywali okungenani ngezilimi ezisemthethweni ezintathu equkethe ulwazi ngaleso Sikhungo Sikawonkewonke lokusetshenziswa wuwonkewonke. Uma kwenzeka le manywali ihunyushelwa kunoma luphi olunye ulimi bese kuba khona ukushayisana noma ukungavumelani phakathi kweyesiNgisi nalolu olunye ulimi, umbhalo wesiNgisi wemanywali yiwo ozolandelwa.

Injongo ye-PAIA wukwakha isikompilo lokungafihli lutho nokuziphendulela komuntu (accountability) kuyo yomibili imikhakha okawonkewonke nowangasese ngokunika nanoma muphi umuntu ilungelo lokuthola ulwazi ngenjongo yokumenza akwazi ukusebenzisa avikele onke amalungelo akhe ngokugcwele okudingekayo.

Injongo ye-POPI wukwenza kusebenze isigaba 14 soMthetho-sisekelo, okuyilungelo elingokomthetho-sisekelo lokuba nengasese ngokuvikela uLwazi Ngomuntu Siqu nokulawula ukutholakala ngokukhululekile nokuSetshenziswa Kolwazi Ngomuntu Siqu.

UMthetho we-POPI unika Labo Bantu Okufunwa Ulwazi Ngabo (Data Subjects) ilungelo lokucela, ngendlela ebekiwe, lesi Sikhungo Esiphathiswe Umthwalo (Responsible Party) ukuba silungise noma sisule uLwazi Ngomuntu Siqu olungaLoyo Muntu Okufunwa Ulwazi Ngaye (Data Subject) esiluphethe noma osilulawulayo uma lolo lwazi lunganembile, lungaphathelene nendaba, lweqisa, luphelelwe yisikhathi, lungaphellele, ludukisa noma lutholakele ngokungemthetho; noma ukuba siphelise noma sesule irekhodi loLwazi Ngomuntu Siqu olungaLoyo Muntu Okufunwa Ulwazi Ngaye lesi Sikhungo Esiphathisiwe esingasagunyaziwe ukulwenza lutholakalale kanye na-/noma ukucela ukuba kulungiswe noma kwesulwe noma luphi uLwazi Ngomuntu Siqu olugciniwe ngaye okungenzeka alunembile, luyadukisa noma luphelelwe yisikhathi.

3. INJONGO YALE MANYWALI

Le Manywali yenziwe ngokwe-PAIA enquma ukuthi isikhungo sikawonkewonke kumele sihlizwe imininingwane yamarekhodi agcinwe yilesi sikhungo sikawonkewonke ukuze izicelo zokuthola ulwazi zikwazi ukwenzeka. Le Manywali isebenza njengomkhombandlela wokuthi ofaka isicelo solwazi angaluthola kanjani lolo lwazi (irekhodi) olugcinwe yi-South African Special Risks Insurance Association (“SASRIA”).

Injongo yale Manywali wukubalula izinqubo zokulandelwa kanye nezici okumele kuhlangebanwe nazo ukuzona noma ubani (“umfakisicelo”) acele ukuthola amarekhodi agcinwe yi-SASRIA noma angaphansi kokulawulwa yiyo. Ngenxa yale njongo kunikwe imininingwane yabantu abaphathiswe umthwalo wokulawula lezo zicelo.

I-SASRIA isekela ilungelo elingomthetho-sisekelo lokutholakala kolwazi futhi sizimisele ukukusiza uwathole amarekhodi ethu ngokuhambisana naloko okuhlizwe wuMthetho, izimiso zobumfihlo okumele sizigcine kulabo okukhulunywa ngabo kanye nezimiso zomthetho waseNingizimu Afrika.

Ngezinjongo ze-POPI, le Manywali iningiliza ngenjongo uLwazi Ngomuntu Siqu olunokusetshenzwa ngayo, ukuchazwa kwezigaba zaLabo Bantu Okufunwa Ulwazi Ngabo iNkampani Esebenza uLwazi Ngomuntu Siqu ngenxa yabo kanye nalezo zigaba zoLwazi Ngomuntu Siqu ezihlobene naLabo Bantu Okufunwa Ulwazi Ngabo; kanye nalabo bemukeli uLwazi Ngomuntu Siqu abanokulunikwa.

4. AMATEMU AWUSIZO/IZINCAZO

Imali ekhokhelwa ukutholakala: Lena yimali ekhokhwa wumfakisicelo esikhungweni sikawonkewonke noma sangasese lesi ocela kuso ulwazi, ngenjongo yokuhlangebanwe nezindleko zokuthola nokukopisha amarekhodi.

Umthetho: UMthetho Wokukhuthaza Ukutholakala Kolwazi, 2000 (uMthetho Na. 2 ka-2000) obizwa nangokuthi yi-PAIA.

Ikhasimende: Nanoma muphi umuntu ongokwemvelo noma ongokomthetho owathola noma othola amasevisi ku-SASRIA.

Loyo Muntu Okufunwa Ulwazi Ngaye: loyo muntu ulwazi ngomuntu siqu olungaye.

Ifomu A: Litholakala ngasekugcineni kwe-PAIA, ku-website ye-SAHRC, nama-website ezikhungo zikawonkewonke ezihlukahlukene. Leli fomu lisetshenziselwa ukucela ukuthola ulwazi olugcinwe yisikhungo sikawonkewonke.

Ifomu C: Litholakala ngasekugcineni kwe-PAIA, ku-website ye-SAHRC, nama-website ezikhungo zikawonkewonke ezihlukahlukene. Leli fomu lisetshenziselwa ukucela ukuthola ulwazi olugcinwe yisikhungo sangasese.

Umkhombandlela: Kusho lo Mkhombandlela ngePAIA owenziwe washicilelwa yi-SAHRC, ukusiza abantu basebenzise futhi baqonde i-PAIA, njengoba kuhlinzekwe kuSigaba 10 se-PAIA.

ISikhulu Solwazi nePhini Lesikhulu Solwazi: ISikhulu Solwazi (ngesinye isikhathi okuthiwa yi-IO) wumuntu ogunyazwe ukusingatha izicelo ze-PAIA. Esikhungweni sikawonkewonke, lona wumuntu oyinhloko noma obambeke inhloko yaleso sikhungo. IPhini Lesikhulu Solwazi (ngesinye isikhathi okuthiwa yi-DIO) wumuntu omiswe yiSikhulu Solwazi sesikhungo sikawonkewonke ukusiza umfakisisicelo ngesicelo sabo solwazi.

Umuntu ongokomthetho: Inkampani noma indikimba eqashelwa wumthetho njengesikhungo noma 'umuntu' onamalungelo nezibopho.

Ungqongqoshe: Uma kukhulunywa ngoNgqongqoshe kushiwo uNgqongqoshe Wezobulungiswa Nezinkonzo Zokulungisa Izimilo.

Umuntu ongokwemvelo: Umuntu ongokoqobo, lapho ehlukani noma nomuntu ongokomthetho njengenkampani.

Izilimi ezisemthethweni zaseNingizimu Afrika: IsiNgisi, isiBhunu, isiNdebele, isiXhosa, isiZulu, isiPedi, isiSuthu, isiTswana, isiSwazi, isiVenda nesiTsonga.

ULwazi Ngomuntu Siqu: ULwazi ngomuntu onokuhlonzwa, kuhlangukane, nokho kungagcini lapho, ulwazi oluphathelelele nohlanga, ubulili, ucansi, ukukhulelwa, isimo ngokomshado, isizinda sobuzwe (national), ubuzwana (ethnic) noma ngokwezenhlalo, umbala, ukuthambekela ngokwezocansi, ubudala, impilo ngokomzimba noma ngokwengqondo, ubuhle besimo, ukukhubazeka, inkolo, unembeza, inkolelo, isikompilo, ulimi, nokuzalwa kwaloyo muntu njengoba kuchazwe ku-PAIA isigaba 1.

Izisebenzi: Nanoma muphi umuntu osebenzela i-SASRIA noma ohlinzeka kuyo izinkonzo noma ozihlinzeka egameni layo, futhi othola noma ofanele ukuthola iholo nanoma muphi omunye umuntu osiza ekwenzeni noma ekuqhubeni ibhizinisi le-SASRIA, okuhlangukane, ngaphandle kokubekelwa imingcele, abaqondisi (abalawulayo nabangalawuli), bonke abasebenzayo abaqashwe unomphelo, okwesikhashana nabasebenza isikhathi esiyingxenyane kanye nezisebenzi zezinkontrakti.

Isikhungo sangasese: Kushiwo umuntu ongokwemvelo noma ongokomthetho noma inhlangukanyelo yobambiswano (partnership) okubandakanyeka noma okuye kwabandakanyeka kunoma luphi uhwebo, ibhizinisi noma iprofesheni ngokwaleso sikhundla.

Ukusebenza (processing): Nanoma muphi umsebenzi owenziwayo (noma imisebenzi) owenziwa ngendlela yokuzenzakalela noma cha, othinta ulwazi ngomuntu siqu, kuhlangukane ukuqoqwa, ukwemukelwa, ukurekhodwa, ukuhlelwa, ukudidiyelwa, ukulondolozwa, ukulungiswa noma ukuhlelwa ngenye indlela, ukutomulwa, ukushintshwa, ukuxoxisana ngalo noma ukulusebenzisa, ukusabalaliswa ngokuthunyelwa, ukusakazwa noma ukwenziwa lutholakale noma ngamuphi omunye umumo, noma ukuhlangukane ndawonye, noma ukuxhunyaniswa, kanye nokubekelwa imingcele, ukwehliswa kweqophelo, ukwesulwa noma ukupheliswa kolwazi.

Amarekhodi Avikelwe: Amarekhodi aqukethe ulwazi olubucayi angenakwenziwa atholakale kuwonkewonke ngokwaloko okuhlinzekwe yi-PAIA izigaba 33 kuya ku-45.

Isikhungo Sikawonkewonke: Noma muphi umnyango kahulumeni noma isigceme solawulo (administration) sikahulumeni kazwelonke noma wesifundazwe, noma muphi umasipala kuhulumeni wasekhaya nanoma siphil isikhungo esenza umsebenzi kawonkewonke ngokwanoma muphi umthetho njengoba kuchazwe ku-PAIA isigaba 1.

Irekhodi: Noma luphi ulwazi olurekhodiwe kungakhathaliseki umumo, kuhlangele, ngokwesibonelo, amadokumende abhaliwe, okuqukethwe kumavidiyo, njl. Ngokuthi irekhodi elicelwe esikhungweni sikawonkewonke noma sangasese kushiwo irekhodi eligcinwe kuleso sikhungo kungakhathaliseki noma yiso yini isikhungo esakha lelo rekhodi.

Amarekhodi avele atholakale: Amarekhodi atholakala ngaphandle kokuthi umuntu acele ukuwathola ngokulandela izimfuno zoMthetho njengoba kubalulwe kusigaba 15(1)(a) se-PAIA.

Amarekhodi atholakala ngesicelo: Amarekhodi anokutholwa ngokulandela izinkambiso ze-PAIA njengoba zibalulwe ku-PAIA izigaba 11 no-18; ukutholakala kwala marekhodi kungase kwenqatshwe ngesisekelo sezigaba 33 ukuya ku-45 zoMthetho.

Imali Yesicelo: Izindleko ezikhokhelwa ukwenza isicelo sokuthola ulwazi. Maqondana nesicelo solwazi esenziwa esikhungweni sikawonkewonke kukhona imali emisiwe eyi-R35; kuthi esikhungweni sangasese kube yi-R50.

Isicelo sokuthola ulwazi: Isicelo sokuthola irekhodi elikuleso sikhungo ngokweSigaba 50 se-PAIA.

Umfaki-sicelo: Umuntu ongokwemvelo noma ongokomthetho ocela ukuthola ulwazi. Ukuthi umfaki-sicelo kusho futhi loyo muntu ocelela omunye.

Umuntu Oseceleni: Noma muphi umuntu ongokwemvelo noma ongokomthetho okungeyena umfaki-sicelo noma lesi sikhungo okucelwa kuso ulwazi.

Izinsuku zokusebenza: Noma ziphi izinsuku ngaphandle kweMigqibelo, aMasonto noma amaholide kawonkewonke.

5. UMKHOMBANDLELA WOMLAWULI NGOKWESIGABA 10 SOMTHETHO

Ukwenezela kule Manyali, abafaki-zicelo baziswa ukuthi iKhomishani Yamalungelo Abantu YaseNingizimu Afrika (i-“SAHRC” noma “umlawuli”) iye yashicilela umkhombandlela, ngokwesigaba 10 se-PAIA, ocacisa ukuthi senziwa kanjani isicelo sokuthola irekhodi.

Noma muphi umuntu ofisa ukusebenzisa ilungelo elibalulwe eMthethweni unelungelo lokuthola ikhophi yalo mkhombandlela okhishwe yiKhomishana Yamalungelo Abantu. Lo Mkhombandlela utholakala ngazo zonke izilimi ezisemthethweni. Amakhophi alo Mkhombandlela ayatholakala ehhovisi eliyinhloko le-SAHRC nakuwo onke amahhovisi ayo ezifundazwe. Ngaphezu kwaloko, ikhophi yelektroniki iyatholakala ku-*website* ye-SAHRC (www.sahrc.org.za).

Imininingwane yokuthintana yomlawuli imi kanje:

Inamba yocingo: 011 887-3600 **Inamba yefekisi:** 011 484 0582/1360

Ikheli Lomgwaqo: Braampark Forum 3, 33 Hoofd Street, Braamfontein, 2017

Ikheli Leposi: Private Bag X2700, Houghton, 2041

Ikheli le-website: www.sahrc.org.za

Ikheli le-email: PAIA@sahrc.org.za

I-POPI ichibiyela i-PAIA ngezindlela eziningana. Enye yezindlela eziyinhloko i-POPI eshintsha ngazo i-PAIA ihlobene nendima ye-SAHRC. Ngaphansi kwe-POPI imisebenzi ye-SAHRC ngokwe-PAIA izodluliselwa kuMlawuli Wolwazi, okuyisikhungo esisha esizimele esizomiselwa ukubeka iso kuko kokubili i-POPI ne-PAIA, nokusingatha izikhalo eziphathelene nokutholakala kolwazi nokuvikelwa kolwazi ngomuntu siqu.

Nokho, i-PAIA izoqhubeka nesibopho sayo esingokoMthetho-sisekelo sokuba ikhuthaze, ivikele, futhi ibeke iso elungelweni lokutholakala kolwazi njenjgelungelo eliqokonyiswe kuMqulu Wamalungelo (Bill of Rights).

6. IMININGWANE YOKUTHINTANA YE-SASRIA

Ngokwe-PAIA, iSikhulu Esilawulayo Esiyinhloko (CEO) sesikhungo sikawonkewonke sijutshwe ngokuzenzakalelayo njengeSikhulu Solwazi Esiyinhloko. Iminingwane yeSikhulu Esilawulayo Esiyinhloko se-SASRIA imi kanje:

ISikhulu Solwazi : Mpumelelo Tyikwe
UMqondisi Ophethe
mpumit@sasria.co.za.

IPhini Lesikhulu Solwazi siye sajutshwa ngokufanelekile yiSikhulu Solwazi, ngokwesigaba 17 se-PAIA, ukuze sisingathe izicelo zokutholakala kolwazi ngokwe-PAIA. Ngakho-ke, abafaki-zicelo kudingeka baqondise zonke izicelo kuPhini Lesikhulu Solwazi elifanelekile ngokwale miningwane yokuthintana engezansi.

IPhini Lesikhulu Solwazi: Mziwoxolo Success Mavuso
UNobhala Wenkampani
mziwoxolom@sasria.co.za

Ikheli Leposi:	P.O. Box 653367 Benmore 2010	Ikheli Lomgwaqo:	36 Fricker Road Illovo 2196
-----------------------	------------------------------------	-------------------------	-----------------------------------

Inamba yocingo:	011 214 0800	Inamba yefekisi:	011 447 8630
------------------------	--------------	-------------------------	--------------

Ikheli le-website: www.sasria.co.za

7. UKWELEKELWA KWESICELO SOKUTHOLAKALA KOLWAZI

Ulwazi olungatholakali nje manjalo njengoba kuboniswe kule manywali, lunokucelwa ngokuvumelana nenqubo ebekwe ngokoMthetho. Amakhophi amafomu okumele agcwaliswe ukuze kufakwe isicelo ayatholakala e-SASRIA SOC Limited.

Amarekhodi Agcinwe Yi-SASRIA angatholakala ngesicelo kuphela uma sekuhlangabezenwe nezimfuneko zokuwathola. Umfaki-sicelo yinoma ubani owenza isicelo sokuthola irekhodi le-SASRIA futhi kuloku uMthetho wehlukhanisa phakathi kwezinhlobo ezimbili zabafaki-sicelo:

- Umfaki-sicelo Mathupha - Umfaki-sicelo mathupha wumfaki-sicelo ofuna ukuthola irekhodi eliqukethe ulwazi olungaye umfaki-sicelo ngokwakhe. Kuye ngokwaloko okuhlinzekwe wuMthetho neminye imithetho esebenza kule ndaba, i-SASRIA izolunika ulwazi oluceliwe,

noma yenze litholakale noma liphi irekhodi elimayelana nolwazi ngomfaki-sicelo ngokwakhe. I-SASRIA izobiza imali ebekiwe yokulukhiqiza busha lolo lwazi oluceliwe.

- Omunye uMfaki-sicelo - Lo mfaki-sicelo (okungeyena umfaki-sicelo mathupha) unelungelo lokucela ulwazi olumayelana nabantu abaseceleni (third parties). Nokho, i-SASRIA ayibophekile ukumane ikunike okucelwayo ngaphambi kokuba umfaki-sicelo ahlangebazane nezimfuneko zokunikwa ngokusho koMthetho. I-SASRIA izobiza imali ebekiwe yokulukhiqiza busha lolo lwazi oluceliwe.

8. MAYELANA NE-SASRIA

I-South African Special Risks Insurance Association (uSosesheni Womshwalense Wezingcuphe Ezikhethekile WaseNingizimu Afrika – kafishane okuthiwa yi-SASRIA) yamiswa ngo-1979. I-SASRIA SOC Limited iyisikhungo sikahulumeni esaqala samiswa njengenkampani ngokoMthetho Wezinkampani Na. 61 ka-1973 njengenkampani yesigaba 21 okungekahulumeni kuphela. I-SASRIA yabe isiguqulwa ekubeni yinkampani yesigaba 21 yaba yinkampani kawonkewonke ngokoMthetho Wokuguqulwa Kwe-SASRIA, Na. 134 ka-1998 lapho uhulumeni yedwa eqhubeka ewumnini wenkampani.

I-SASRIA iyiNkampani Yomshwalense Wenkathi Emfishane enika ikhava ngomonakalo obangwa yizingcuphe ezikhethekile njengezenzo ezimbi ezishukunyiswa yipolitiki, izibhelu, iziteleka, ubushokobezi nezinxushunxushu zomphakathi. I-SASRIA yiyona kuphela inkampani yomshwalense wenkathi emfishane enegunya lokuqinisekisa ukukhokhelwa kwalezi zinhlekelele ezingenhla ngokoMthetho Wokuthathela Busha Umshwalense Umonakalo Nokulahlekelwa Na. 56 ka-1989 (Reinsurance of Damages and Losses Act, No.56 of 1989).

Thina njengesikhungo sikahulumeni, silandisa kuNgqongqoshe Wezezimali ngokudlula eSikhwameni Samafa Sikazwelonke (National Treasury). Sifeza iziqondiso eziyisisekelo ezimbili, esokuqala kungesesishayamthetho esibizela ukugxila ocwaningweni nophenyo lwanoma ziphi izingcuphe ezibhekwa njengezithinta izwe lonke. Isiyalelo sesibili sibandakanya ukufaka isandla ngokubonakalayo ukuze kulethwe izinguquko embonini yezinkonzo zezimali ngokuvumelana nePulani Lokuthuthukisa Likazwelonke. Loku kwakhela abantu baseNingizimu Afrika isimo esinozinzo kwezomnotho nakwezenhlalo.

I-SASRIA iwuMhlinzeki Wezinkonzo Zezimali (Financial Services Provider – FSP) ogunyaziwe ngaphansi kwenamba yelayisense 39117.

9. INJONGO YETHU

Umbono:

- Ingcuphe ekhethekile ekhavwayo.

Impokophelo:

- Ukuhlinzeka izixazululo ezingcupheni ezikhethekile ukuze iNingizimu Afrika izinze.

Amagugu (values):

- Ubulungiswa
- Isimo sokuziphatha
- Inkonzo Ephuma Phambili
- Ukusebenzisana
- Ukuqamba Okusha

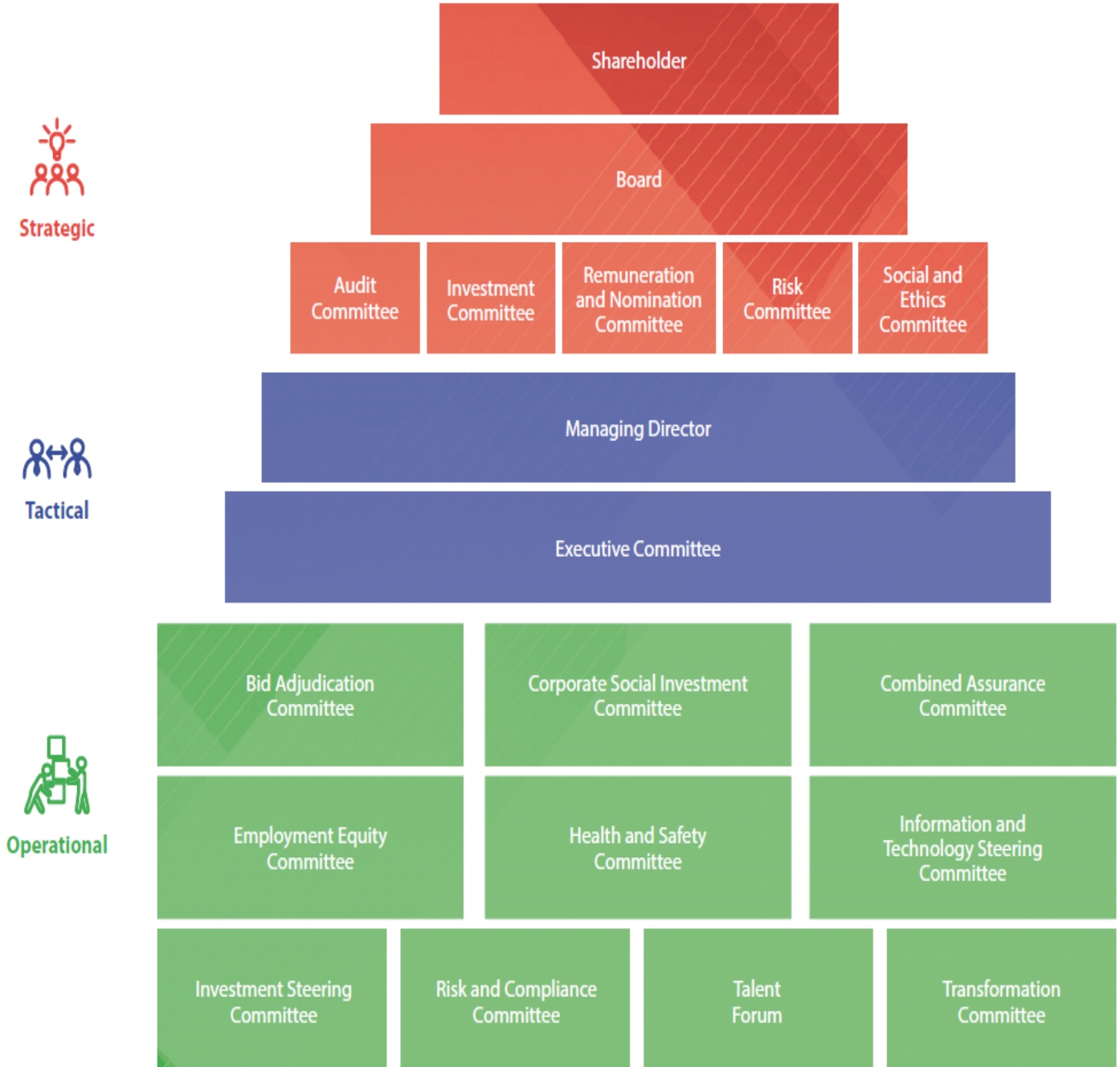
10. IBHIZINISI LETHU

Business process	Explanation	Stakeholders
Provide special risk cover	We do not sell our products directly to our end-customers. Instead, we enter into agreements with other short-term insurance companies and intermediaries in South Africa who then, as agents, represent and sell the special risks cover to our end-customers, be they individuals, businesses, government or corporate entities. The agents and brokers (intermediaries) engage with our end-customers on policy administration and collect premiums on our behalf.	<ul style="list-style-type: none"> • Customers
Pay fees	We pay the agents binder fees for performing administration on our behalf. We also pay intermediaries commission for selling our products to current and new customers.	<ul style="list-style-type: none"> • Agents and brokers
Pay claims	The only contact that we have with end-customers is on the settlement of claims. Customers submit claims to the intermediaries or insurance companies, who confirm their validity prior to submission to Sasria. We receive and verify all claims before payment directly to the customer.	<ul style="list-style-type: none"> • Customers
Reinsure risks	We buy reinsurance cover to protect and strengthen our balance sheet and pay reinsurance premiums to reinsurers. We receive recoveries from reinsurers when the reinsurance treaties are triggered.	<ul style="list-style-type: none"> • Reinsurers
Pay salaries and other expenses	We incur costs in managing the business, including paying our directors, employees and service providers, as well as suppliers, for goods and services, and benefactors of our corporate social investment activities.	<ul style="list-style-type: none"> • Employees • Suppliers • Community
Pay taxes and fees	We pay all the relevant taxes and statutory fees to the authorities.	<ul style="list-style-type: none"> • Authorities • Regulatory bodies • Associations
Invest	Our premium, after payment of claims and expenses, is invested, whilst ensuring and maintaining the adequate liquidity levels for claims payment. Our investments earn good returns in the form of interest, dividends and capital growth.	<ul style="list-style-type: none"> • Investments
Pay dividends	We pay our shareholder a dividend from our distributable reserves.	<ul style="list-style-type: none"> • Shareholder

11. UHLAKA LOHLELEKO

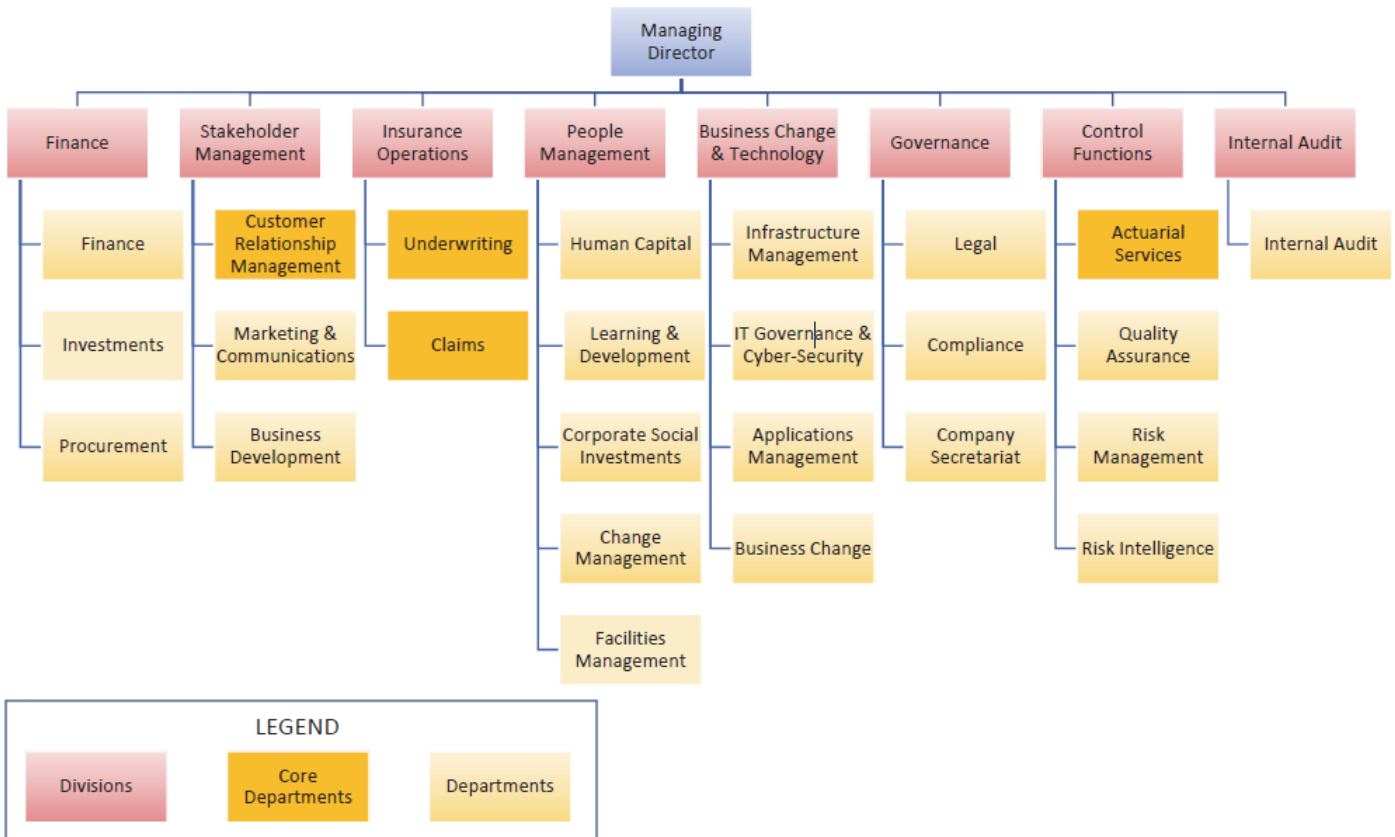
IBhodi Le-SASRIA, njengegunya elilandisayo, lizibophezele ezimisweni zokuba sobala, ukungafihli lutho, ubuqotho nokulandisa njengoba kugququzelwa yi-King IV.

UHLaka Lokuhleleka lwe-SASRIA lumi kanje:



12. UHLAKA LOKWENZIWA KOMSEBENZI

Uhlaka Lokwenziwa Komsebenzi lwe-SASRIA lumi kanje:



13. INQUBOMGOMO NGOKUPHATHELENE NOBUMFIHLO NOKUTHOLAKALA KOLWAZI

I-SASRIA izovikela ubumfihlo bolwazi elunikwa ngabantu abaseceleni (third parties), kuye ngezibopho zayo zokudalula ulwazi ngokwanoma muphi umthetho noma isiqondiso esisebenza kuleyo ndaba noma isiyalelo senkantolo esibizela ukudalulwa kolwazi. Uma kucelwa ukutholakala kwerekhodi eliqukethe ulwazi ngomuntu oseceleni, i-SASRIA ibophekile ukuba izame ukuthola loyo muntu oseceleni ukumbikela ngaleso sicelo.

I-SASRIA izonika loyo muntu oseceleni ithuba lokuphendula okungaba wukusivumela isicelo noma ukunika izizathu zokuba senqatshwe. Uma kwenzeka loyo muntu oseceleni enika izizathu zokuba kuvunyelwe noma kwenqatshelwe isicelo, iPhini Lesikhulu Solwazi lizocabangela lezi zizathu bese linquma noma isicelo kumele sivunyelwe noma cha.

14. ULWAZI OLUVELE LUTHOLAKALE

Ngokwe-PAIA lezi zigaba zamarekhodi zivele zitholakale nakanjani e-SASRIA uma nje umfaki-sicelo ecela ulwazi:

- Izisebenzi zingafaka isicelo serekhodi lokuqashwa lomuntu ngokwakhe ngokuthinta iSikhulu Solwazi uma leso Sisebenzi sehluleka ukuthola lelo rekhodi eMnyango Wezisebenzi (HR).

- Imicimbi Yekhalenda Le-SASRIA.
- Ulwazi olulayishwe ku-*website* ye-SASRIA (www.sasria.co.za):
 - Ulwazi olumayelana ne-SASRIA
 - Izinkonzo Nemikhiqizo
 - Okukhululwe Yimithombo Yezindaba (Izindaba Nezinkundla Zokuxhumana)
 - IManywali Yokuqeqesha
 - *Ama-circular*
 - IBhodi Namakomiti Ebhodi
 - INqubomgomo Yokulawula Isimo Sokuziphatha
 - INqubomgomo Yokuvimbela Ukukhohlisa Nokuhlaba Ikhwelo
 - INqubomgomo Yezipho Nokwemukelwa Kwabantu
 - INqubomgomo Yokulawulwa Kwezikhalo
 - INqubomgomo Yokusingathwa Kokungqubuzana Kwezinkathalelo (interests)
 - INqubomgomo Yokulawulwa Kolwazi Namarekhodi
 - Ukulawulwa Komgudu Wokunikezelana Kohwebo (Izinqubomgomo, Amamanywali Enqubo, Imikhombandlela, Amafomu Esicelo)
 - Izikhala zomsebenzi
- Amabhukwana olwazi.
- Amapheshana.
- Amaphowusta.
- Izincwadi-ndaba.
- Amafomu okukileyima.
- Amabhukwana Okumaketha nezinto zokunika ulwazi mayelana nemisebenzi nezinkonzo ze-SASRIA.
- Izicelo zokuncenga enkantolo (emva kokuthweswa icala) – zitholakala ngomuntu ngamunye.
- Iziyalelo Zenkantolo – zitholakala ngomuntu ngamunye.
- Izigwebo – zitholakala ngomuntu ngamunye.
- Amarekhodi Afunwa Wumthetho.
- Amapulani Angokweqhinga (Strategic Plans).
- Imibiko Yaminyaka Yonke.
- Umbiko Wezinyanga Ezintathu ofunwa wumthetho, Umbiko obuyiswayo we-FSCA, Umbiko Waminyaka Yonke (Izimali: Ukubika), Imininingwane Yasebhange; kanye nama-akhawunti asebhange (Izimali: ISikhwama Samafa).

- UMthetho Wokulawulwa Kwezimali Zomphakathi Neziqondiso Zesikhwama Samafa).
- Amathenda/Amakhothesheni.

Iningi lolwazi lunikezwa mahhala. Imibandela yokusebenzisa lolo lwazi iyatholakala ku-*website*.

15. ULWAZI OLUTHOLAKALA NGOKWEMINYE IMITHETHO

I-SASRIA igcina amarekhodi aphantsi nemithetho eminingana, okuhlanganisa, phakathi kokunye, loku okulandelayo:

Ulwazi luyatholakala ngokwezinhlinzeko ezithile zale mithetho elandelayo:

- UMthetho Wokunquma juqu amacala 42 ka-1965 (Arbitration Act 42 of 1965)
- UMthetho Wokuhlola Umonakalo 9 ka-1969 (Assessment of Damages Act 9 of 1969)
- UMthetho Wemibandela Yokuqashwa Eyisisekelo 75 ka-1997 (Basic Conditions of Employment Act 75 of 1997)
- UMthetho Wokufukulwa Okusabalele Kwabamnyama Kwezomnotho 53 ka-2003 (Broad-Based Black Economic Empowerment Act 53 of 2003)
- UMthetho Wezinkampani 61 ka-1973 (Isahluko XIV kuphela) (Companies Act 61 of 1973 (Chapter XIV only))
- UMthetho Wezinkampani 71 ka-2008 (Companies Act 71 of 2008)
- UMthetho Wokunxephezela Kokulimala Emsebenzini Nezifo Zezempilo 130 ka-1993 (Compensation for Occupational Injuries and Health Diseases Act 130 of 1993)
- UMthetho Wokuvikelwa Kwabathengi 68 ka-2008 (Consumer Protection Act 68 of 2008)
- UMthetho-sisekelo WaseRiphabliki YaseNingizimu Afrika 108 ka-1996 (Constitution of the Republic of South Africa 108 of 1996)
- UMthetho Wabaqoqi Bezikweletu 114 ka-1998 (Debt Collectors Act 114 of 1998)
- UMthetho Wezokuxhumana Ngelektroniki 36 ka-2005 (Electronic Communications Act 36 of 2005)
- UMthetho Wezokuxhumana Namatransekisheni Kwelektroniki 25 ka-2002 (Electronic Communications and Transactions Act 25 of 2002)
- UMthetho Wobulungiswa Bezokuqashwa 55 ka-1998 (Employment Equity Act 55 of 1998)
- UMthetho Wokukhuthaza Intelu Yokuqashwa 26 ka-2013 (Employment Tax Incentive Act 26 of 2013)
- UMthetho Weziko Lobuhlakani Bezezimali 38 ka-2001 (Financial Intelligence Centre Act 38 of 2001)
- UMthetho Wokulawulwa Komkhakha Wezezimali 9 ka-2017 (Financial Sector Regulation Act 9 of 2017)
- UMthetho Wezinhlalo Zezikhalazo Zezinkonzo Zezezimali 37 ka- 2004 (Financial Services Ombud Schemes Act 37 of 2004)

- UMthetho Wentela Yengeniso 58 ka-1962 (Income Tax Act 58 of 1962)
- UMthetho Womshwalense 18 ka-2017 (Insurance Act 18 of 2017)
- UMthetho Wohlaka Lobudlelwano Phakathi Kohulumeni 13 ka-2005 (Intergovernmental Relations Framework Act 13 of 2005)
- UMthetho Wobudlelwano Basemsebenzini 66 ka-1995 (Labour Relations Act 66 of 1995)
- UMthetho Wezikweletu Kazwelonke 34 ka-2005 (National Credit Act 34 of 2005)
- Umthetho Wobuncane Bamaholo Kazwelonke (National Minimum Wage Act 9 of 2018)
- UMthetho Wohlelo Lokukhokha Kazwelonke 78 ka-1998 (National Payment System Act 78 of 1998)
- UMthetho Wezempilo Nokuphepha Emsebenzini 85 ka-1993 (Occupational Health and Safety Act 85 of 1993)
- UMthetho Wohlaka Lwenqubongomo Yokuqoka Ngokukhetha 5 ka-2000 (Preferential Procurement Policy Framework Act 5 of 2000)
- UMthetho Wokuvimbela Nokunqanda Izenzo Zenkohlakalo 12 ka-2004 (Prevention and Combating of Corrupt Activities Act 12 of 2004)
- UMthetho Wokuvimbela Ubugebengu Obuhleliwe 121 ka-1988 (Prevention of Organised Crime Act 121 of 1998)
- UMthetho Wokuvikekwa Kwentando Yeningi Ngokomthetho-sisekelo Ebushokobezini Nezenzo Ezihlobene 33 ka-2004 (Protection of Constitutional Democracy Against Terrorist and Related Activities Act 33 of 2004)
- UMthetho Wokuvikelwa Kolwazi 84 ka-1982 (Protection of Information Act 84 of 1982)
- UMthetho Wokudalula Okuvikelwe 26 ka-2000 (Protected Disclosures Act 26 of 2000)
- UMthetho Wokukhuthaza Ukutholakala Kolwazi 2 ka-2000 (Promotion of Access to Information Act 2 of 2000)
- UMthetho Wokukhuthaza Ukulingana Nokuvimbela Ukucwasa Okungenabulungisa 4 ka-2000 (Promotion of Equality and Prevention of Unfair Discrimination Act 4 of 2000)
- UMthetho Wokuvikela Ibhizinisi 99 ka-1978 (Protection of Businesses Act 99 of 1978)
- UMthetho Wokulawulwa Kwezimali Zikawonkewonke 1 ka-1999 (Public Finance Management Act 1 of 1999)
- UMthetho Wokuthathelwa Busha Umshwalense Komonakalo Nokulahlekelwa 56 ka-1989 (Reinsurance of Damage and Losses Act 56 of 1989)
- UMthetho Wezindlu Eziqashisayo 50 ka-1999 (Rental Housing Act of 50 of 1999)
- UMthetho Wamatayitela Enhlanganyelo 95 ka-1986 (Sectional Titles Act 95 of 1986)
- UMthetho Wokulawulwa Kwezinhlelo Zamatayitela Enhlanganyelo 8 ka-2011 (Sectional Titles Schemes Management Act 8 of 2011)

- UMthetho Wokulawulwa Kwezakhiwo Ezihlanganyelwayo 59 ka-1980 (Share Blocks Control Act 59 of 1980)
- UMthetho Womshwalense Wenkathi Emfishane 53 ka-1998 (Short-Term Insurance Act 53 of 1998)
- UMthetho Wezimali Zokuthuthukiswa Kwamakhono 53 ka-1999 (Skills Development Levies Act 9 of 1999)
- UMthetho Wokuthuthukiswa Kwamakhono 97 ka-1998 (Skills Development Act 97 of 1998)
- UMthetho Wokulawulwa Kwentela 28 ka-2011 (Tax Administration Act 28 of 2011)
- UMthetho Weminikelo Yokuphelelwa Wumsebenzi 4 ka-2002 (Unemployment Contributions Act 4 of 2002)
- UMthetho Womshwalense Wokuphelelwa Wumsebenzi 63 ka-2001 (Unemployment Insurance Act 63 of 2001)
- UMthetho Wentela Yenani Elenezelwe 89 ka-1991 (Value Added Tax Act 89 of 1991)

I-SASRIA izame ngako konke enako ukuhlinzeka uhla lwemithetho esebenza kule ndaba. Nokho, kungenzeka ukuthi lolu hla aluphelele. Nanini lapho siqaphela ukuthi umthetho othile okhona noma omusha uvumela umfaki-sicelo ukuba athole ulwazi ngokwesisekelo esingabekiwe ku-PAIA, sizolulungisa lolu hla luvumelane naloko.

16. AMAREKHODI AGCINWE YI-SASRIA

Lapha ngezansi kubekwe uhla lwezihloko i-SASRIA egcina ngazo amarekhodi kanye nezigaba ngesihloko ngasinye. Sicela uqaphele ukuthi ofaka isicelo akavele nje anikwe la marekhodi nanokuthi ukutholakala kwamarekhodi kungase kwenqatshwe noma kufuneke ukuba kwenqatshwe kuye ngokwezigaba 62 kuya ku-69 zoMthetho.

Uhlaka Oluyimfuneko Yomthetho Noma Lokuqondisa (Yonke imisebenzi ephathelene nokudrafwa nokuchibiyelwa kweMithetho, iZiqondiso, iMiqulu, iZiphakamiso zikahulumeni; iMibiko kahulumeni, iZinhlaka zenkambiso, njl.)
<ul style="list-style-type: none"> • Imithetho kahulumeni
<ul style="list-style-type: none"> • UMthetho Wasendlini (Own Act)
<ul style="list-style-type: none"> • Eminye iMithetho
<ul style="list-style-type: none"> • Amafayela Enqubomgomo
<ul style="list-style-type: none"> • IZiqondiso Zasendlini (Own Regulations)
<ul style="list-style-type: none"> • Ezinye iZiqondiso
Uhleleko Nolawulo (Yonke imisebenzi ephathelene nokumiswa kwemigomo yesikhungo yesikhathi esikude neyesiseduze kanye nokulawulwa kwesikhungo)
<ul style="list-style-type: none"> • Ukuhlelwa Busha Kwenkampani
<ul style="list-style-type: none"> • Ukuphathiswa Kwabanye Igunya wuMqondisi Olawulayo (MD)

•	Ukulawulwa Kokuqhubeka Kwebhizinisi
•	Eyokuqoqa Imininingwane
•	Ukufanekiswa Kwekhaphithali (Capital Modelling)
•	Ukumiswa Kwamanani Entengo (Technical Pricing)
•	Uhlaziyo Lwemininingwane
•	Okwenzeka Ngokwesidingo Sangaleso Sikhathi
•	I-ORSA
•	Ukubika Okufunwa Wumthetho
•	Ukuvuselela Umshwalense
•	Ukumiswa Kweminyango Emisha
•	Uhlaka Lokuhleleka
•	Amapulani Angokweqhinga (Corporate Planning)
•	Okupulanwa Kwenkampani (Strategic Plans)
•	Amapulani Ebhizinisi
•	Ukuqinisekiswa Kwekhwalithi (Quality Assurance – QA)
•	Ukulawulwa Kocubungulo-mabhuku Lwangaphakathi
•	Abacubunguli-mabhuku Bangaphandle
•	Ukulawulwa Kwezingcuphe
•	Iqhinga Ngezingcuphe
•	Ukuthanda Izingcuphe (Risk Appetite)
•	Ukukhula Kwezingcuphe (Risk Escalation)
•	Ukuhlonza Izingcuphe
•	Ukuhlola Izingcuphe
•	Ukukalwa Kwezingcuphe
•	Ukunciphisa Igalelo Lezingcuphe
•	Ukuqapha Izingcuphe
•	Ukuzihlelela Ukungawi Kwebhizinisi Ngenxa Yezingcuphe (Own Risk Solvency Assessment)
•	Ukuhlola Izingcindezi (Stress Testing)
•	Ukulawula Ingcuphe Yokuthatha Busha Umshwalense (Reinsurance Risk Management)
•	Ukulawula Izingcuphe Zokuqinisekisa Ukukhokha (Underwriting Risk Management)
•	Ukulawula Izingcuphe Zemakethe
•	Ukulawula Izingcuphe Zokunika Isikweletu
•	Ukulawula Izingcuphe Zokwenza Umsebenzi

•	Ukulawula Izingcuphe Zebhizinisi (Enterprise Risk Management)
•	Ukulawulwa Kwezingcuphe Ngokweqhinga (Strategic Risk Management)
•	Ukuhlinzekwa Kwezinto Ezi- <i>technical</i> (Technical Provisions)
•	Ukulawula Okuyisibonelo (Model Governance)
•	Umshwalense Wangaphakathi
•	Izinkonzo Zobunobhala (Secretariat Services)
•	IBhodi Labaqondisi (Ukulawulwa Kwenkampani)
•	Ukuhlinzekwa Kwabeluleki Babaqondisi (Directors Advisor Provision)
•	INdakisheni Nokuthuthukiswa Kubaqondisi (Director Induction and Development)
•	IKomiti Elilawulayo Namakomiti Angaphansi (Exco and Sub Committees)
•	IKomiti Elicushisa Ngotshalo (Investment Steering Committee)
•	IKomiti Elicushisa Ngethekinoloji Yolwazi (IT Steering Committee)
•	IKomiti Lobulungiswa Bezokuqashwa (Employment Equity Committee)
•	IKomiti Lezingcuphe Nokuthobela Umthetho (Risk and Compliance Committee)
•	IKomiti Elinquma Ngamabhidi (Bid Adjudication Committee)
•	IKomiti Elihlaziya Amabhidi (Bid Evaluation Committee)
•	IKomiti Elibeka Izimfuneko Zamabhidi (Bid Specification Committee)
•	Utshalo Lwezinkampani Emphakathini (Corporate Social Investment)
•	Labo IKomiti Elilawulayo Elithintana Nabo (Exco Touchbase)
•	Ukuthuthukiswa Kwebhizinisi
•	Ukuguquka Kwebhizinisi (Business Transformation)
•	IKomiti Lendlela Yokusebenza (Operations Committee)
•	IKomiti Lokushintsha Amalayisense (Licencing Conversion Committee)
•	IKomiti Lokuthambisa (Moderation Committee)
•	ISithangami Samakhono Awelele (Talent Forum)
•	IKomiti Lokuqashelwa (Recognition Committee)
•	Ukwakhiwa Nokubukezwa Kwezinqubomgomo (Policy Development and Review)
•	IKomiti Lokucushisa Ngokubika Okudidiyelwe (Integrated Report Steering Committee)
•	Ukucushisa Ngamasikompilo (Culture Steering)
•	IKomiti Lebhodi Labaqondisi (Board of Directors Committee)

<ul style="list-style-type: none"> • IKomiti Lokucubungulwa Kwamabhuku (Audit Committee)
<ul style="list-style-type: none"> • IKomiti Lokunquma Amaholo Nokuphakamisa Amagama (Remuneration and Nominations Committee)
<ul style="list-style-type: none"> • Ezenhlalo Nokuziphatha Okuhle (Social and Ethics)
<ul style="list-style-type: none"> • IKomiti Lezingcuphe (Risk Committee)
<ul style="list-style-type: none"> • UMhlangano Webhodi Labaqondisi (Board of Directors Meeting)
<ul style="list-style-type: none"> • Ukukhulumisana Nabathintekayo (Correspondence with Stakeholders)
<p>Ukuphathwa Kwezisebenzi (Yonke imisebenzi emayelana nokuphathwa kwezisebenzi zenkampani)</p>
<ul style="list-style-type: none"> • Ukurikrutha Nokukhetha
<ul style="list-style-type: none"> • Ukuqala Ukusebenzisa (On Boarding)
<ul style="list-style-type: none"> • Ukulawulwa Kwensebenzo (Performance Management)
<ul style="list-style-type: none"> • UBudlelwano Nezisebenzi
<ul style="list-style-type: none"> • Ukuyekiswa Umsebenzi (Termination)
<ul style="list-style-type: none"> • Ukusingathwa Kwamaholo (Payroll Administration)
<ul style="list-style-type: none"> • Ukufunda Nokuthuthuka (Learning and Development)
<ul style="list-style-type: none"> • Ukuthobela Abasemagunyeni (Submissions to Authorities)
<ul style="list-style-type: none"> • Utshalo Lwezinkampani Emphakathini (Corporate Social Investment)
<ul style="list-style-type: none"> • Ukulawula Izinguquko (Change Management)
<ul style="list-style-type: none"> • Amapulani Emisebenzi Eyenziwayo (Activity Plans)
<p>Ukulawulwa Kwezimali (Yonke imisebenzi ephathelene nokwenza imali yenkampani, ukuyifaka kokuthile (allocating), ukuyisebenzisa nokulandisa ngayo)</p>
<ul style="list-style-type: none"> • Ukulandisa Ngezimali
<ul style="list-style-type: none"> • Ukuvalwa Kwesitatimende Sezimali (Financial Statement Close)
<ul style="list-style-type: none"> • Ulwazi Ngensebenzo (Performance Information)
<ul style="list-style-type: none"> • Ukubika Okudidiyelwe (Integrated Reporting)
<ul style="list-style-type: none"> • Iminqwabelano (Accruals)
<ul style="list-style-type: none"> • Impahla, Ipulanti, Nempahla Yokusebenza (Property, Plant and Equipment)
<ul style="list-style-type: none"> • Impahla Engaphatheki Ngesandla (Intangible Assets)
<ul style="list-style-type: none"> • I-Premium
<ul style="list-style-type: none"> • Izinhlobo Zotshalo (Investments)
<ul style="list-style-type: none"> • Ibhajethi
<ul style="list-style-type: none"> • Intela (Tax)

<ul style="list-style-type: none"> Isabelo (Dividend)
<ul style="list-style-type: none"> Ukulawulwa Kokusetshenziswa Kwemali
<ul style="list-style-type: none"> Ukuthuthukiswa Kwenkampani Nabahlinzeki
<ul style="list-style-type: none"> Ukusetshenziswa Kwemali Okungafezi Lutho, Okusaphazayo Nokungalandeli Nqubo
<p>Ukulawulwa Komgudu Wokunikezelana Kwezohwebo (Supply Chain Management) (Yonke imisebenzi emayelana yokutholakala, ukulondolozwa nokulawulwa kwempahla esetshenziswa ephelayo (consumable assets))</p>
<ul style="list-style-type: none"> Ukuthenga (Procurement)
<ul style="list-style-type: none"> Ukuqokwa Kwamakhonsalithenti (Appointment of Consultants)
<ul style="list-style-type: none"> Izinkontraki (Contracts)
<p>Ukulawulwa Kwezikhungo (Yonke imisebenzi ephathelene nokupulanwa, ukuklanywa, nokulawulwa kwezakhiwo, imishutheko (installations) yazo e-mechanical nekagesi kanye namapulanti, njl, impahla yokusebenza, nefenisha namabala kanye nezinkonzo zeposi nezokuxhumana ibanga elikude)</p>
<ul style="list-style-type: none"> Imisebenzi Yezikhungo (Facilities Functions)
<ul style="list-style-type: none"> Ukulawulwa Kokunganqamuki Kwebhizinisi (Business Continuity Management)
<p>Ukutravula Namalungiselelo Ezokuthutha (Yonke imisebenzi emayelana nokusingathwa kwamalungiselelo okutravula nokuhlinzekwa kwezokuthutha ukuze kunikezwe izinkonzo)</p>
<ul style="list-style-type: none"> Ukutravula (Travel)
<p>Izinkonzo Zolwazi (Yonke imisebenzi ephathelene nokuhlinzekwa nokulawulwa kwezinsiza zolwazi zalesi sikhungo)</p>
<ul style="list-style-type: none"> Izicelo
<ul style="list-style-type: none"> Ukulawulwa Kwengqalasizinda
<ul style="list-style-type: none"> Ukulawulwa Kwenkonzo
<ul style="list-style-type: none"> Ingcuphe Yokulawula kanye Nokuphepha Ku-internet
<ul style="list-style-type: none"> Ukulawulwa Kwamaprojeke
<ul style="list-style-type: none"> Ukulawulwa Kwamarekhodi
<ul style="list-style-type: none"> Ukulawulwa Kolwazi (knowledge)
<ul style="list-style-type: none"> Ukutholakala kolwazi ngokoMthetho Wokukhuthaza Ukutholakala Kolwazi
<ul style="list-style-type: none"> UMthetho Wokuvikelwa Kolwazi Ngomuntu (Protection of Personal Information Act)
<ul style="list-style-type: none"> Ikhwalithi Yemininingwane
<ul style="list-style-type: none"> Indlela Ibhizinisi Elakheke Ngayo (Enterprise Architecture)

<ul style="list-style-type: none"> • UMFanekiso Omkhulu Womklamo (Architecture Metamodel)
<ul style="list-style-type: none"> • UNdlaleko Lomklamo (Architecture Landscape)
<ul style="list-style-type: none"> • Irekhodi Lokulawula (Governance Log)
<ul style="list-style-type: none"> • ISilulu Sebhizinisi (Enterprise Repository)
<ul style="list-style-type: none"> • Isizinda Solwazi Lwezindinganiso (Standards Information Base)
<ul style="list-style-type: none"> • Umtapo Wamareferensi
<p>Ukuxhumana (Yonke imisebenzi ehlobene nokupulanwa, ukusetshenziswa (implementing), ukweluswa nokubukezwa kwamaqhinga okushicilela nokumaketha kanye nokusabalaliswa kolwazi)</p>
<ul style="list-style-type: none"> • Ukumaketha Nokukhangisa
<ul style="list-style-type: none"> • Iqhinga Lokusebenza
<ul style="list-style-type: none"> • Iqhinga Lokumaketha
<ul style="list-style-type: none"> • Ukumaketha Kwangaphakathi
<ul style="list-style-type: none"> • Ukukhangisa
<ul style="list-style-type: none"> • Ukumaketha Okudijithali
<ul style="list-style-type: none"> • Izinkundla Zokuxhumana
<ul style="list-style-type: none"> • I-website
<ul style="list-style-type: none"> • Izinsiza Zokumaketha
<ul style="list-style-type: none"> • Izindlela Zokuxhumana
<ul style="list-style-type: none"> • Ubuhlobo Nowonkewonke
<ul style="list-style-type: none"> • I-multimedia
<ul style="list-style-type: none"> • Ukuxhaswa
<ul style="list-style-type: none"> • Okunye okuyingxubevange
<p>Izinkonzo Zomthetho (Yonke imisebenzi ephathelene nokuhlinzekwa kweseluleko esingokomthetho, ukuthathela izinyathelo zomthetho nokulawulwa kwezinkontraki)</p>
<ul style="list-style-type: none"> • Ezomthetho
<ul style="list-style-type: none"> • Ukuhambisana nomthetho (Compliance)
<ul style="list-style-type: none"> • Ukulawulwa Kokuziphatha (Ethics Management)
<ul style="list-style-type: none"> • Ukusingathwa Kwezikhalo
<ul style="list-style-type: none"> • Ukusingathwa Kokungqubuzana Kwezinkathalelo (Conflict of Interest Management)
<ul style="list-style-type: none"> • Izimfuneko Ezifanele Neziqondile
<ul style="list-style-type: none"> • Ukuvinjelwa Kokukhwebanisa Nokuhlaba Umkhosi (Fraud Prevention and Whistleblowing)
<ul style="list-style-type: none"> • Ukuthola Izidingo Ngaphandle (Outsourcing)

Ukwethamela Nokubamba Imibuthano (Yonke imisebenzi ephathelene nokuhlinzekwa kweseluleko esingokomthetho, ukuthathela izinyathelo zomthetho nokulawulwa kwezinkontraki)
• Izinkomfa
Umshwalense (Imisebenzi yenkampani ewumgogodla; ngokuyinhloko umshwalense)
• Amakileyimu
• Ukuphishekela Ukubuyisa Okulahlekayo (Pursue Recovery)
• Ukuqinisekisa Ukukhokha
• Ubudlelwano Namakhasimende
• Ukuhlaziywa Kwendawo Ezungezile
• Ukulawulwa Kokukhulisa Ibhizinisi (Business Development Management)
• Ukukhulisa Imakethe
• Ubuhlakani Bemakethe
• Imisebenzi Eyenziwayo (Operational Activities)
• Ukwakhiwa Nokuthuthukiswa Kwemikhiqizo

17. UKUVIKELWA KOLWAZI NGOMUNTU SIQU OLUSETSHENZWA YI-SASRIA

ISahluko 3 se-POPI sihlinzekela isimo esiphansi seMibandela Yokusetshenzwa Okusemthethweni Kolwazi Ngomuntu okwenziwa yileso Sikhungo Esiphathiswe Umthwalo. Akuvumelekile ukuchezuka kule mibandela ngaphandle kokuba kukhona ngokuqondile i-POPI ebalula ukuba kubekwe eceleni. I-SASRIA idinga uLwazi Ngomuntu olumayelana nako kokubili umuntu ongokoqobo nongokomthetho ukuze ikwazi ukuqhuba ibhizinisi layo ifeze nemisebenzi yayo. Indlela lolu lwazi oluSetshenzwa ngayo nenjongo yokuSetshenzwa kwalo inqunywa yi-SASRIA. Kanjalo, i-SASRIA iyileso Sikhungo Esiphathiswe Umthwalo ngokuqondene ne-POPI futhi izoqinisekisa ukuthi uLwazi Ngomuntu oluqondene noMuntu Wemininingwane lusetshenzwa ngokweMibandela Yokusetshenzwa Okusemthethweni njengoba kuqokethwe ku-POPI futhi kuchazwe lapha ngezansi:

- Ukulandisa – Leso Sikhungo Esiphathiswe Umthwalo sibophekile ukuqinisekisa ukuthi uKusetshenzwa Kolwazi Ngomuntu kuhambisana ne-POPI
- Imingcele yoKusetshenzwa – ULwazi Ngomuntu kumele luqoqwe ngokuthe ngqo ngoMuntu Wemininingwane (Data Subject) ngokwesilinganiso esifunekayo; kumele lusetshenzwe kuphela ngemvume yaloyo Muntu Wemininingwane futhi kumele lusetshenziselwe lezo zinjongo olwatholelwa zona kuphela.
- Ukucacisa injongo – ULwazi Ngomuntu kumele lusetshenzelwe kuphela leyo njongo ngokuqondile olutholelwe yona futhi akumele lugcinwe isikhathi eseqa lesa esidingekayo ukuze kufezwe leyo njongo
- Eminye imingcele yokusetshenzwa – Ukusetshenzwa okwengeziwe koLwazi Ngomuntu kumele kuhambisane nenjongo yasekuqaleni lolu lwazi olufunelwe yona

- Ikhwalithi yolwazi – ISikhungo Esiphathiswe Umthwalo kumele siqiniseke ukuthi njalo nje uLwazi Ngomuntu lugcinwa lunembile futhi lungolwamuva nanokuthi ubuqotho balolo lwazi buyalondolozwa ngezinyathelo ezifanelekile zokulondeka (security)
- Ukuba sobala – Kumele kube khona ukungafihli lutho phakathi koMuntu Wemininingwane neSikhungo Esiphathiswe Umthwalo
- Okokuqinisekisa ukulondeka – ISikhungo Esiphathiswe Umthwalo kumele sithathe izinyathelo ezisesilinganisweni ukuqinisekisa ukuthi kukhona ukulondeka okwanele ukuze uLwazi Ngomuntu lusetshenzwe ngokuqikelela futhi kungenzeki lukhishwe ngokungemthetho
- Iqhaza loMuntu Wemininingwane – UMuntu Wemininingwane kumele azi ukuthi kusetshenzwa ulwazi ngaye futhi abe eyinikile imvume yakhe enolwazi ukuba kwenziwe loko kusetshenzwa

ULwazi Ngomuntu kumele luSetshenzwe kuphela ngenjongo ethile ngokuqondile. Izinjongo i-SASRIA eSebenza noma ezoSebenza uLwazi Ngomuntu yilezi:

- Ukunika i(zi)nkonzo kumakhasimende nabahlinzeki bezinkonzo
- Ukusingatha izindaba zezisebenzi (Staff administration)
- Ukugcinwa kwama-akhawunti namarekhodi
- Ukuhambisana nemithetho yentela
- Imikhakha yaBantu Beminingwane (amakhasimende nabahlinzeki bezinkonzo) noLwazi Ngabo
 - Amagama
 - Imininingwane Yokuthintana
 - Amakheli elomgwaqo neleposi
 - Usuku lokuzalwa
 - Inamba kamazisi, umazisi, ipasipoti noma iphomedede yomsebenzi
 - Ilayisense yokushayela
 - Ulwazi oluhlobene nentela
 - Ubuzwe
 - Ubulili
 - ibala lohlobo oluthile lwabantu
 - Isimo sokushada
 - Ulwazi ngezemfundo
 - Umlando ngezokuqashwa emsebenzini
 - Ulwazi lwezimali
 - Ukuziphatha ngezokwaphulwa komthetho

I-SASRIA ivumelekile ukunika uLwazi Ngomuntu kubahlinzeki bezinkonzo abanika lezi zinkonzo ezilandelayo:

- Ukubamba nokuhlela imininingwane (data)
- Ukugcinwa kwemininingwane
- Ukuthunyelwa kwama-*email* nokunye ukuthintana kumakhasimende
- Ukuhlola inkuthalo edingekayo

I-SASRIA isebenzisa ithekinoloji yakamuva ukuqinisekisa ubumfihlo, ubuqotho nokutholakala koLwazi Ngomuntu okugcinwe yiyo. Izinyathelo zihlanganisa:

- Izihenqo zomlilo (firewalls)
- I-*software* yokuvika ama-*virus* kanye nezindlela zokuhambisanisa nesikhathi
- Ukulawulwa okunengqondo nokungokoqobo kokutholakala [koLwazi] (Logical and physical access control)
- Uhlelo olulondekile lwe-*hardware* ne-*software* olwakha ingqalasizinda ye-*IT* (Secure setup of hardware and software making up the IT infrastructure)
- Kuqashwe ngenkontraki aBahlinzeki Bezinkonzo bangaphandle abasebenza uLwazi Ngomuntu egameni lale Nkampani ukuze baqinisekise ukusebenza kwezinyathelo zokulondeka (security controls)

ISigaba 72 se-POPI sihlinzeka ukuthi uLwazi Ngomuntu kuvumeleke ukuba lukhishelwe ngaphandle kweRiphabliki YaseNingizimu Afrika ngaphansi kwemibandela ethile.

UMuntu Wemininingwane angase, noma nini, aphikisane noKusetshenzwa koLwazi Ngomuntu oluqondene naye esebenzisa ifomu elibekiwe kuye ngokwezinto ezibekwa eceleni eziqokethwe ku-POPI.

UMuntu Wemininingwane angase acele ukuba uLwazi Ngomuntu oluqondene naye lulungiswe/lususwe esebenzisa ifomu elibekiwe.

18. IZINQUBO ZOKUFAKA ISICELO

IPhini Lesikhulu Solwazi siyatholakala ukuze sisize ngokugcwaliswa kwmafomu.

Umfaki-sicelo kumele anikwe irekhodi lesikhungo sikawonkewonke uma umfaki-sicelo enalezi zimfuneko:

- Umfaki-sicelo unazo zonke izimfuneko zokulandelwa kwenqubo ezibekwe eMthethweni mayelana naleso siceleosokuthola irekhodi
- Akenqatshelwa ukuthola lelo rekhodi ngesisekelo sokweqatshelwa esishiwo wuMthetho
- Umfaki-sicelo uzonikwa impendulo ebhaliwe ngaleso sicelo kungakhathaliseki ukuthi isicelo siyemukelwa noma cha
- Uma ulwazi lungatholakali kuzobhalwa isitatimende esifungelwe, sisayinwe, sithunyelwe kumfaki-sicelo

- Isicelo sizosetshenzwa phakathi nezinsuku ezi-30 (amashumi amathathu) emva kokutholwa kwaso noma isikhathi singase selulwe yisikhulu solwazi ngezinye izinsuku eziyi-30 (amashumi amathathu)
- Naphezu kwale nkathi eshiwo ngenhla, iphini lesikhulu solwazi kumele sithole ukugunyazwa yiKomiti Eliqondisayo noma uMqondisi Ophethe ngaphambi kokuba ulwazi lunikwe umfaki-sicelo

Ubunjalo besicelo:

- Umfaki-sicelo kumele asebenzise ifomu eliprintwe kuPhephandaba Likahulumeni 25099 [ISaziso Sikahulumeni R887 Juni 2003 Ifomu A]. Isithasiselo A sibonisa ifomu okumele ligcwaliswe lapho kucelwa ulwazi. Leli fomu liyatholakala naku-www.sahrc.org.za
- Ifomu A kumele libhekiswe kuPhini Lesikhulu Solwazi ekhelini noma inamba yefekisi eshiwo noma kuthunyelwe i-email e-mziwoxolom@sasria.co.za
- Umfaki-sicelo kumele futhi abonise ukuthi isicelo ngesokuthola ikhophi yerekhodi noma umfaki-sicelo ufuna ukuhlola lelo rekhodi emahhovisi esikhungo sikawonkewonke. Kungenjalo, uma irekhodi lingelona idokumende lingabukwa likuleso simo elikuso, uma kunokwenzeka [iSigaba 29(2)]
- Uma umfaki-sicelo efuna ulwazi ngomumo othile okhethekile, umfaki-sicelo kufanele alunikwe ngaleyo ndlela eceliwe. Okusho ukuthi uma ukwenza kanjalo kungeke ngesilinganiso esiphawulekayo kuphazamise indlela yokusebenza kwaleso sikhungo sikawonkewonke, noma kulimaze irekhodi, noma kwephule ilungelo lokukopisha. Uma ngezizathu eziwakalayo irekhodi lingenakukhishwa ngalowo mumo ofunwayo kodwa ngenye indlela, imali kumele ibalwe ngokomumo oboniswe wumfaki-sicelo ekuqaleni [iSigaba 29(3) no-(4)]
- Uma, ngaphezu kwempendulo ebhaliwe mayelana nesicelo serekhodi, umfaki-sicelo efuna ukwaziswa ngesinqumo nganoma yiphi enye indlela, isib. ucingo, loko kumele kuboniswe [iSigaba 18(2)(e)]
- Uma umfaki-sicelo ecela ulwazi egameni lomunye umuntu, isikhundla isicelo esenziwa ngaso kumele sidalulwe [iSigaba (2)(f)]
- Uma umfaki-sicelo engakwazi ukufunda nokubhala noma enokukhubazeka, isicelo serekhodi sinokwenziwa ngomlomo. ISikhulu Solwazi kumele sisibhale phansi leso sicelo somlomo sisebenzisa ifomu elibekiwe futhi sinike ikhophi yesicelo kumfaki-sicelo [iSigaba 18(3)]

Kukhona izinhlobo ezimbili zezimali uMthetho obizela ukuba zikhokhwe, okuyimali yeSicelo nemali yoKuthola ulwazi [iSigaba 22]

Umfaki-sicelo ocela ukuthola irekhodi eliqukethe ulwazi ngomuntu olumayelana naye ngokwakhe loyo mfaki-sicelo akudingeki akhokhe imali yeSicelo. Nanoma muphi omunye umfaki-sicelo okungeyena umfaki-sicelo mathupha kumele akhokhe imali yeSicelo edingekayo. ISikhulu Solwazi kumele sazise umfaki-sicelo (okungeyena umfaki-sicelo mathupha) isaziso esifuna okulandelayo. Ukuba umfaki-sicelo akhokhe imali ebekiwe (uma idingeka) ngaphambi kokuba sisetshenzwe isicelo.

- Imali yesicelo ekhokhwa ezikhungweni zikawonkewonke yi-R35. Umfaki-sicelo angase, lapho kufaneleke khona, adlulisele udaba phambili ngaphakathi esikhungweni noma afake isicelo enkantolo esiphikisa ukukhokhwa kwemali yesicelo

- Emva kokuba isikhulu solwazi sesinqumile ngesicelo, umfaki-sicelo kumele aziswe ngaleso sinqumo ngaleyo ndlela umfako-sicelo afuna ukwaziswa ngayo
- Lapho isicelo semukelwa (granted), kumele sikhokhelwe imali yokuthungatha, ukulungisa (prepare), ukukhiqiza busha nanoma siphilisi isikhathi eseqa amahora abekelwe ukuthungatha nokulungisa irekhodi ukuze lidalulwe

Umuntu ofuna ukuthola amarekhodi kumele agcwalise ifomu lesicelo elidingekayo, elitholakala emahhovisi e-Sasria SOC Limited, noma e-www.sahrc.org.za. Ifomu lesicelo eligcwalisiwe kumele lithunyelwe ekhelini noma inamba yefekisi enikwe kule manywali, futhi kuphawulwe ukuthi libhekiswe kuSikhulu Solwazi.

19. ULWAZI NOMA AMAREKHODI OKUNGATHOLAKALI

Uma i-SASRIA ingawatholi amarekhodi afunwa wuMfaki-sicelo naphezu komzamo owanele wokuthungatha ngenkuthalo futhi kukholakala ukuthi lawo marekhodi alahlekile noma akhona kodwa awanakufinyeleleka, uMfaki-sicelo uzothola isaziso mayelana naloko esivela kuSikhulu Solwazi esiyisitativimende esifungelwe esibalula izinyathelo ezithathiwe ukucinga lelo dokumende kodwa kwacaca ukuthi alinakutholakala.

20. IZIZATHU ZOKWENQABELA UKUTHOLAKALA KOLWAZI

UMthetho uhlinzeka izizathu okungenqatshwa ngazo ukuba atholakale amarekhodi futhi, phakathi kokunye, izizathu i-SASRIA engenqaba ngazo ukukhipha amarekhodi yilezi:

- Ukuvikelwa kolwazi okuyimfuneko ngokoMthetho i-FAIS [iSigaba 3 soHlaka Lokuziphatha Okulindelekile] lapho kumaqondana khona naleyo nto ethathelwe umshwalense ngaphansi kwanoma yiphi ipholisi yomshwalense futhi lapho lowo mshwalense ungazange ngokucacile unike umfaki-sicelo isiyalelo esibhaliwe sokuba athole ulwazi olubalulwe ngokuqondile ngaleyo nto ethathelwe umshwalense
- Ukuvikelwa kolwazi okuyimfuneko ngama-*return*, imibiko, izinto ezilethwayo (submissions), izibalo (statistics), njl. okuphathelene nobudlelwano bezentengiselwano obuphakathi kwe-SASRIA nanoma yiphi inkampani yomshwalense noma umphathi-mabhuku (administrator)
- Ukuvikelwa kolwazi okuyimfuneko ngokuphathelene nezinto ezilethwayo, imibiko, ama-*return*, izincwadi okubhalelanwe zona, njl. phakathi kwe-SASRIA nanoma muphi umlawuli (regulator) [kuhlanganise, kodwa kungacini lapho, iGunya Lokuziphatha Emkhakheni Wezezimali, iGunya Lokucabanga Kahle (Prudential Authority) kanye neZiko Lobuhlakani Bezezimali]
- Ukuvikelwa okuyimfuneko kwengasese lomuntu oseceleni (third party) lapho loyo muntu kuwumuntu ongokwemvelo obekuyoba wukudalulwa okungafanelekile kolwazi ngomuntu mayelana naloyo muntu ongokwemvelo
- Ukuvikelwa okuyimfuneko kolwazi lwezentengiselwano lomuntu oseceleni lapho kulelo rekhodi noma amarekhodi acelwayo kuqukethwe:
 - izimfihlo zohwebo zaloyo muntu oseceleni
 - ulwazi olungokwezimali, olungokwesayensi noma olu-*technical* (ukudalulwa kwalo okungase kumlimaze loyo muntu oseceleni ngokwezimali noma ngokwezentengiselwano)

- ulwazi olwadalulwa yiloyo muntu oseceleni ku-SASRIA njengoluyisifuba, uma ukudalulwa kwalolo lwazi kungase kubeke loyo muntu oseceleni esimeni esibucayi ezingxoxisanweni noma ekuncintisaneni kwezentengiselwano
- Ukuvikelwa okuyimfuneko kolwazi oluyimfihlo ngabantu abaseceleni uma luvikelwe ngokwesivumelwano
- Ukuvikelwa okuyimfuneko kokuphepha kwabantu ngabanye kanye nokuvikelwa kwempahla
- Ukuvikelwa okuyimfuneko kwamarekhodi anelungelo lokuba angavezwa ekuqulweni kwezindaba zomthetho
- Ulwazi olungokwezentengiselwano lwe-SASRIA olungase luhlanganise, nokho kungapheleli lapho:
 - izimfihlo zohwebo
 - ulwazi olungokwezezimali, olungokwezentengiselwano, olungokwesayensi, noma olu-*technical* (ukudalulwa kwalo okungase kulimaze i-SASRIA ngokwezezimali noma ngokwezentengiselwano)
 - ulwazi okungathi uma ludalulwa lubeke i-SASRIA esimeni esibucayi ezingxoxisanweni noma ekuncintisaneni kwezentengiselwano
 - ama-*program* ekhompuyutha ne-*software* yethekinoloji yolwazi ehlobene naloko okungeye-SASRIA futhi evikelwe ngelungelo lokukupisha
- Ukuvikelwa okuyimfuneko kolwazi lwezocwanigo oluqoqwe yi-SASRIA noma umuntu oseceleni uma ukuludalula kuzobeka ucwaningo esimeni esibucayi kakhulu
- Lonke ulwazi olucelwe e-SASRIA olumayelana nolwazi ngomuntu njengoba kuchazwe eMthethweni Wokuvikelwa Kolwazi Ngomuntu kuzokwenqatshwa ukulukhipha ngokwalo mshwana ngaphandle kokuba umfaki-sicelo, ngezakhe izindleko, ekwazi ukubonisa ukuthi ukunikwa kwalolu lwazi kuloyo ocelayo angeke kuwephule uMthetho
- EMthethweni ulwazi ngomuntu luchazwe ngokuthi wulwazi olumayelana nomuntu onokuhlonzwa, ophilayo, ongokwemvelo futhi, lapho kusebenza khona, kube wumuntu ongokomthetho onokuhlonzwa, okhona okuhlanganisa, nokho kungapheleli lapho:
 - ulwazi oluhlobene nohlanga, ubulili, ukukhulelwa, isimo ngokomshado, isizinda ngokobuzwe (national), ubuzwana (ethnic) noma ezenhlalo (social), umbala, ukuthambekela ngokwezocansi, ubudala, impilo engokomzimba noma ngokwengqondo, ukuba sesimeni esikahle (wellbeing), ukukhubazeka, inkolo, unembeza, inkolelo, isikompilo, ulimi nokuzalwa kwaloyo muntu
 - ulwazi olumayelana nemfundo noma umlando wezokwelashwa, ezezimali, ezokwephula umthetho noma ezokuqashwa kwaloyo muntu
 - nanoma yiphi inamba yokuhlonza (kuhlanganise inamba ye-akhawunti), uphawu, ikheli le-*email*, ikheli lomgwaqo, inamba yocingo, noma kuphi okunye okunjalo ngomuntu
 - inhlobo yegazi noma luphi olunye ulwazi lokubonisa ngokomzimba waloyo muntu
 - imibono yomuntu siqu, noma izinto umuntu azikhethayo

- ukuthintana ngezincwadi (correspondence) okuthunyelwa wumuntu okuyinto yangasese noma eyimfihlo ngokugudliselayo noma ngokusobala noma okunye ukuthintana okunokudalula loko obekushiwo wukuthintana kokuqala
- imibono yomunye umuntu ngaloyo muntu
- negama lomuntu uma livela likanye nolunye ulwazi oluhlobene naloyo muntu noma uma ukudalulwa kwegama ngokwako kuyodalula ulwazi ngaloyo muntu

Kubalulekile ukuqaphela ukuthi i-PAIA ayinakusetshenziselwa ukuthola amarekhodi azosetshenziswa lapho kuqulwa amacala ombango noma obelelesi (civil or criminal proceedings) uma loko kuqulwa sekuqalile uma ukuvezwa noma ukutholakala kwamarekhodi ngenjongo efanayo kuhlinzekelwe emthethweni.

21. UKUTHOLAKALA KWALE MANYWALI

Le manywali izotholakala/izoshicilelwa nge-*internet* ku-*website* ye-SASRIA (www.sasria.co.za)

Amakhophi ale manywali ayatholakala ngenjongo yokuhlola, mahhala, emahhovisi e-SASRIA SOC Limited.

Ngaphansi kwe-POPI, akunasibopho sokuyisa le manywali e-SAHRC.

22. IZINDLELA ZOKULUNGISA EZITHOLAKALAYO UMA IZINHLINZEKO ZOMTHETHO ZINGALANDELWA

UMthetho awubeke mfuneko yokuba kube khona izinqubo zangaphakathi zokudlulisela izikhalo okumele zilandelwe uma isicelo sokuthola ulwazi senqatshwa, futhi i-SASRIA ayinazo. Ngaleyo ndlela, siwujuqu isinqumo esenziwa yisikhulu solwazi mayelana nesicelo.

Umfaki-sicelo (noma umuntu oseceleni, lapho kusebenza khona) angase afune usizo kunoma yiphi inkantolo enegunya elifanelekile ngalezi zinqumo zeSikhulu Solwazi ezilandelayo:

- Ukwenqatshwa noma ukwenqatshwa ngokwengxenywe kwesicelo sokuthola ulwazi
- Inani lezimali okumele zikhokhwe
- Ukunwebeka kwesikhathi ulwazi oluzonikwa ngaso
- Ukunikwa irekhodi lingomumo ohlukile kulowo ocelwe ekuqaleni

Zonke izinqubo zomthetho kumele zethulwe kuleso Sikhulu Solwazi esiye sasingatha leso sicelo.

23. UKULUNGISWA KWE MANYWALI IHAMBISANE NESIKHATHI

Le Manywali ye-PAIA iyiphepha likusebenza okumele lidamane libukezwa izikhathi ngezikhathi. Le manywali izolungiswa ihambisane nesikhathi okungenani kanye ngonyaka.

24. UKWEMUKELWA KWENQUBOMGOMO NGABASEBENZAYO

Bonke abantu abasebenzayo abaphathelene nendaba kumele bakuvume ukuthi bakufundile futhi bayakuqonda okuqukethwe yileli dokumende ngokuba basayine iphepha lokuvuma labasebenzayo.

Abantu abaphathelene nendaba kuzodingeka njalo baphinde balisayine Iphepha Lokuvuma Labasebenzayo lapho kubukezwa le manywali ye-PAIA.

25. UMUNTU OSAYINAYO

Bonke abantu abaphathelene nendaba bayavuma ukuthi bayifundile futhi bayayiqonda le manywali.

Ngako konke ukwazi nokukholelwa kwethu, siqinisekisa ukuthi ulwazi olunikwe lapha lunembile futhi luphelele.

Mpumelelo Tyikwe

Isikhulu Solwazi

Ukusayina Kwesikhulu Solwazi

18 Ntulikazi 2022

Usuku